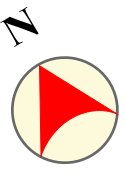
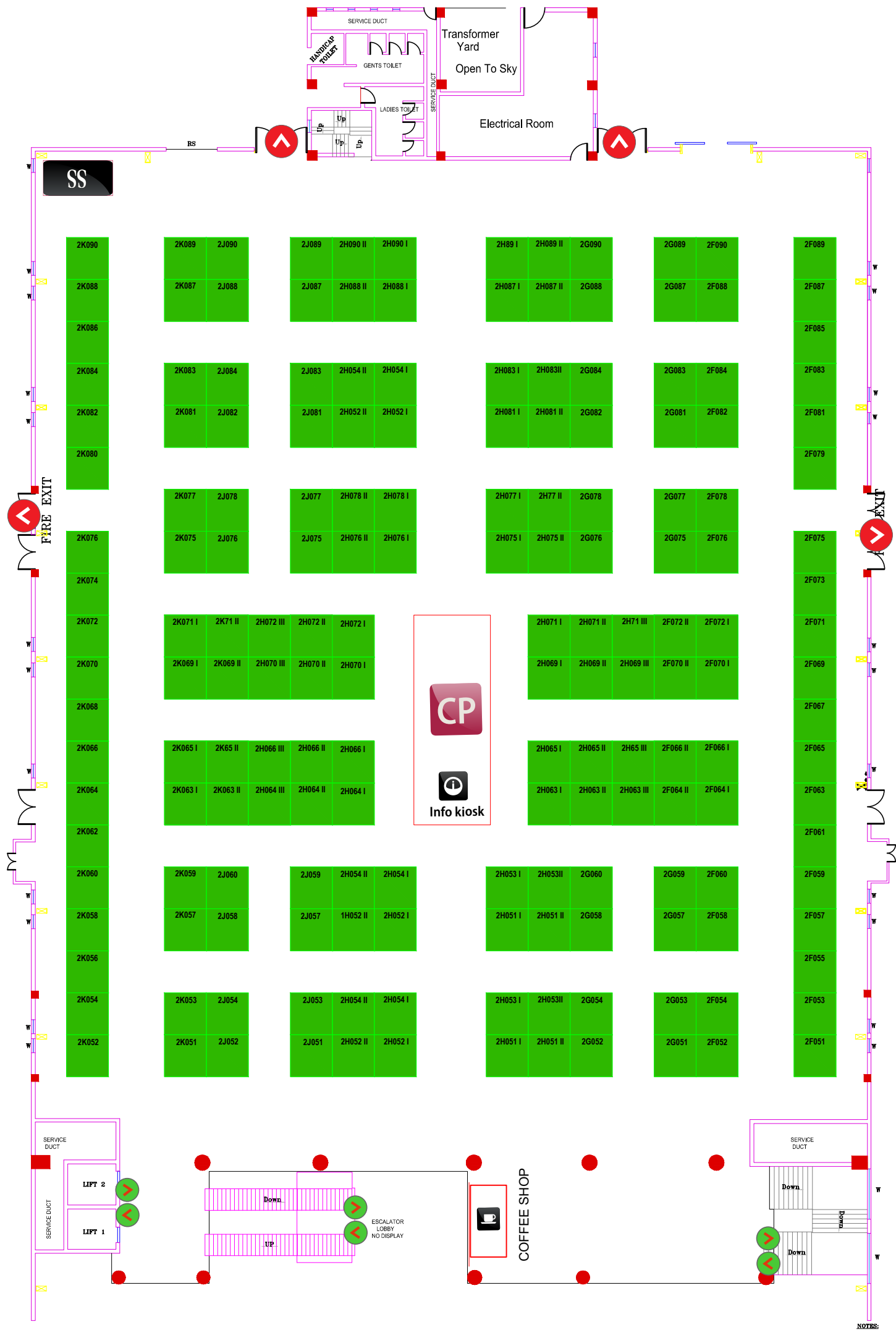


HALL 2B - UPPER LEVEL



- COUTURE JEWELLERY
- COFFEE SHOPS
- CP CENTRAL SQUARE
- MAIN ENTRY / EXIT
- EMERGENCY EXIT
- INFO KIOSK
- RESTROOMS

STALL PREMIUM APPLICABLE

Corner (2/3 Side Open) 10%

Island (4 Side Open) 15%

Premium (Center Aisle) 25%

Disclaimer:

Installations designed for ambience and information kiosk will be created at the various location and the council retains the right to change the same without prior notice. The stalls around the central squares will may not have unobstructed visibility as the installation will have varying heights. Aisle widths across the plan might vary due to sight constraints. Stalls around the central square peripheries will have a 3mt. minimum clear space from the stall boundaries. several locations are having different booth dimensions (length & breadth).

Exhibitor are advised to select their stalls taking into consideration the locations and varying dimentions of Aisle space, columns, PDB boxes distance from the nearest pillar / pillars as marked in the plans. The plans provided are not to scale but are accurate as possible, however due to site constraints and ongoing site up-gradations minor variations and changes may occur. Council retains the right to make any necessary changes on the floorplan as necessitated by safety and regulatory requirements on site which all all exhibitors are liable to stricly adhere to.